

**Solar 4 All Monthly Activity Report - January 2025**

Site	Property Owner	Cost per Project (\$k)	NPV of 20 Year Lease Cost (\$k)	EPC Contractor	Site Location Address
<b>Segment 1a</b>					
Linden	PSE&G		N/A	ASP	South Wood Avenue, Linden, NJ 07036
Yardville	PSE&G		N/A	ACE	Broad Street, Hamilton, NJ 08611
Silver Lake	PSE&G		N/A	JFC	410 Silver Lake Avenue, Edison, NJ 08817
Trenton	PSE&G		N/A	SunEdison	500-520 Brunswick Avenue, Trenton, NJ 08638
Central HQ	PSE&G		N/A	Solis (Solyndra)	472 Weston Canal Road, Franklin, NJ 08873
Edison Training	PSE&G		N/A	Henkle & McCoy	234 Pierson Avenue, Edison, NJ 08837
Thorofare	PSE&G		N/A	SunEdison	Jessup Road, Thorofare, NJ 08086
Hackensack	PSE&G		N/A	JFC	194-210 South River Street, Hackensack NJ 07601
Metro/Clifton	PSE&G		N/A	Gloria Solar	150 Circle Ave, Clifton, NJ 07011
S. DivHQ Moorestown	PSE&G		N/A	Vanguard	360 New Albany Road, Moorestown, NJ
<b>Segment 1b</b>					
CPP Bayonne	CenterPoint Properties		\$1,402	ASP	30-100 Pulaski Street, Bayonne, NJ 07002
Matrix - Stults Rd	Matrix Development Group		\$2,228	Pro-Tech	45 Stults Rd, South Brunswick, NJ 08810
Rider	Rider University		\$642	Alteris	2083 Lawrenceville Road, Lawrenceville, NJ 08648
NJMC / Kearny Landfill	NJ Meadowland Commission		\$2,561	Sundurance	932 Bellville Turnpike, Kearny, Hudson County NJ 07032
Mill Creek	Judith Tucci		\$3,189	Juwi	600 Irick Road, Westampton, NJ 08060
Food Bank	Community Food Bank of NJ		\$772	Mercury	31 Evans Terminal, Hillside, NJ 07250
Raritan Center	Summit Associates Inc.		\$1,729	ASP	45 Fernwood Avenue and 110 Fieldcrest Avenue, Edison, NJ 08818
BlackRock-Matrix	Granite South Brunswick, LLC		\$1,800	Pro-Tech	140 Docks Corner Road, South Brunswick, NJ 08810
<b>Segment 1c</b>					
Matrix Bldg A & B	Matrix Development		\$2,191	enXco	1000 & 1050 Amboy Ave, Perth Amboy, NJ 08861
Barringer	Newark Public Schools		\$635	Mercury	90 Parker St, Newark, NJ 07104
Park	Newark Public Schools		\$482	Mercury	120 Manchester Place, Newark, NJ 07104-1704
Camden (NWK)	Newark Public Schools		\$971	ALM	281 & 321 Camden Street Newark, New Jersey 07103
New Central HS	Newark Public Schools		\$495	LB Electric	246 18th Ave, Newark, NJ 07108
<b>Segment 2</b>					
Pole-Attached	PSE&G		N/A	Riggs-Distler	Various

**Notes:**

"Cost per Project" corresponds to projects that have been placed in service.

"NPV of 20 Year Lease Cost" is derived using an annual discount rate of 5.07%

Regarding Segment 2 (Pole-attached): Riggs Distler is the installation contractor, not an EPC contractor

"Cost per Project" includes AFUDC

**Solar 4 All Monthly Activity Report - January 2025**

Site	Owner location	Type of customer	Status of the installation	Capacity of Project (MW-DC)
<b>Segment 1a</b>				
Linden	80 Park Plaza, Newark, NJ 07102	Utility	Commercial Operation	3.20
Yardville	80 Park Plaza, Newark, NJ 07102	Utility	Commercial Operation	4.30
Silver Lake	80 Park Plaza, Newark, NJ 07102	Utility	Commercial Operation	2.02
Trenton	80 Park Plaza, Newark, NJ 07102	Utility	Commercial Operation	1.26
Central HQ	80 Park Plaza, Newark, NJ 07102	Utility	Commercial Operation	0.92
Edison Training	80 Park Plaza, Newark, NJ 07102	Utility	Commercial Operation	0.71
Thorofare	80 Park Plaza, Newark, NJ 07102	Utility	Commercial Operation	0.72
Hackensack	80 Park Plaza, Newark, NJ 07102	Utility	Commercial Operation	1.05
Metro/Clifton	80 Park Plaza, Newark, NJ 07102	Utility	Commercial Operation	0.73
S. DivHQ Moorestown	80 Park Plaza, Newark, NJ 07102	Utility	Commercial Operation	1.07
<b>Segment 1b</b>				
CPP Bayonne	1808 Swift Drive, Oak Brook, IL 60523-1501	Warehouse	Commercial Operation	1.70
Matrix - Stults Rd	Forsgate Drive CN 4000, Cranbury, NJ 08512	Warehouse	Commercial Operation	2.98
Rider	2083 Lawrenceville Road, Lawrenceville, NJ 08548	University	Commercial Operation	0.74
NJMC / Kearny Landfill	One DeKorte Park Plaza, Lyndhurst, NJ 07071	Landfill	Commercial Operation	3.00
Mill Creek	4 St. Albans Place, Haworth, NJ 07641	Private Landowner	Commercial Operation	3.82
Food Bank	31 Evans Terminal Rd, Hillside, New Jersey 07250	Warehouse	Commercial Operation	1.07
Raritan Center	Raritan Plaza I, Edison, NJ 08818	Warehouse	Commercial Operation	2.22
BlackRock-Matrix	BlackRock, 40 E. 52nd Street, New York, NY 10022	Warehouse	Commercial Operation	2.97
<b>Segment 1c</b>				
Matrix Bldg A & B	Forsgate Drive CN 4000, Cranbury, NJ 08512	Warehouse	Commercial Operation	2.86
Barringer	Newark Public Schools, 2 Cedar Street, Newark NJ 07102-3051	Public Schools	Commercial Operation	0.65
Park	Newark Public Schools, 2 Cedar Street, Newark NJ 07102-3051	Public Schools	Commercial Operation	0.51
Camden (NWK)	Newark Public Schools, 2 Cedar Street, Newark NJ 07102-3051	Public Schools	Commercial Operation	0.91
New Central HS	Newark Public Schools, 2 Cedar Street, Newark NJ 07102-3051	Public Schools	Commercial Operation	0.50
<b>Segment 2</b>				
Pole-Attached	80 Park Plaza, Newark, NJ 07102	Utility	Commercial Operation	35.74

**Solar 4 All Monthly Activity Report - January 2025**

Site	Equipment installed (Inverters; Panels)
<b>Segment 1a</b>	
Linden	Three Sunny Central 1000-US inverters; 7,766 Suntech STP280-24/Vd, 3,718 STP275-24/Vd panels
Yardville	Fifty five Chint power system inverters; 5,640 Suntech STP270-24/VD, 4,368 STP275-24/VD, 1,512 STP280-24/VD panels
Silver Lake	Forty seven Chint power system inverters; 3,514 Sharp ND-224UC1, 5,236 ND-U235F1
Trenton	Thirty nine SMA Core 1 inverters; 5,496 Yingli Solar YL230b-29b panels
Central HQ	10 SMA Tripower 15kw inverters, 29 SMA Tripower 20kw Inverters; 4,180 Solyndra SL-001-182U, 648 Solar World SW240MONO panels
Edison Training	7 50kw SMA Tripower inverters, 1 30kw SMA Inverter, 4 24kw SMA Inverter, 10 15kw SMA Inverter; 3,164 Gloria Solar GSM6-225D-E1 panels
Thorofare	Sixteen Chint power system inverters; 2,618 SunTech STP275-24Vd panels
Hackensack	Thirty SMA Core 1 inverters, 4,472 MX Solar MX-60-235 panels
Metro/Clifton	Four Satcon Powergate Plus PVS-75, two PVS-135 inverters; 3,122 Gloria Solar GSM6-235D-E1 panels
S. DivHQ Moorestown	Twenty nine Chint system inverters . 4,563 MX60-235 panels
<b>Segment 1b</b>	
CPP Bayonne	15 SolarEdge SE100KUS inverters and three SolarEdge SE33.3KUS inverters; 7,730 Trina Solar TSM-220PA05 panels
Matrix - Stults Rd	Five Solaron 3159500-1001AD inverters; 12,684 Kyocera K0235GX-LPB panels
Rider	Sixteen Chint system inverters; 2,640 Suntech STP-280 panels
NJMC / Kearny Landfill	Seven Advanced Energy Solaron inverters 2x500kW, 3x333kW, 2x250kW; 12,506 Kyocera KD240GX-LFB panels
Mill Creek	Fifteen SMA Core 1 33 inverters and 3 SMA Sunny Central 1000-US inverters; 29,400 Solar Frontier SF-130-L panels
Food Bank	121 ProHarvest HiQ Inverters; 4,667 Trina Solar TSM-230PA05 panels
Raritan Center	235 ProHarvest HiQ inverters; 7,098 Hyundai HIS-M230SG, 2,604 HIS-M227SG panels
BlackRock-Matrix	Five AE Solaron 3159000-1001AJ inverters; 12,376 Upsolar UP-M240P panels
<b>Segment 1c</b>	
Matrix Bldg A & B	300 ProHarvest HiQ inverters; 10,395 Suntech STP275-24VD panels
Barringer	73 ProHarvest HiQ inverters; 2,310 Suntech STP280-24VB-1 panels
Park	One Satcon PowerGate Plus PVS-375, 8 ProHarvest HiQ inverters; 1,440 Sunpower PL-SUN-SPR-305-U, 264 Suntech STP270-24/VB-1 panels
Camden (NWK)	101 ProHarvest HiQ Inverters; 3,264 ET Solar ET-P672280 panels
New Central HS	58 ProHarvest HiQ inverters; 1,857 Suntech STP270-24/VB-1 panels
<b>Segment 2</b>	
Pole-Attached	Suntech STP200-18/UB-1, STP205-18/UD, STP210-18/UB-1, STP215-20/WD, STP220-20/WD, STP225-20/WD, Trina Solar TSM-220PA05, TSM-225PA05, TSM-235PA05, TSM-240PA05

**Solar 4 All Monthly Activity Report - January 2025**

January 2025 Monthly Update												
Segment	Energy Produced (MWh AC)	Net Energy Sales (\$)	SREC's Sold	SREC Revenue (\$)	Capacity Sold (MW-days)	Net Capacity Sales (\$)	Business Interruption Insurance Recovery (\$)	Investment (\$)	Program Expenses (\$)	Projects Completed / Seg 2 Panels Installed	MW Installed	Pole-attached Units Communicating
Segment 1a	969	\$ 50,841			-	\$ -	\$0	\$0	\$98,020	0	0.0	
Segment 1b	1,128	\$ 59,835			-	\$ -	\$0	\$0	\$105,131	0	0.0	
Segment 1c	122	\$ 6,170			-	\$ -	\$0	\$0	\$135,959	0	0.0	
Segment 2	2,231	\$ 121,080			-	\$ -	\$0	\$36,847	\$459,123	0	0.000	152,331
<b>Program Total</b>	<b>4,449</b>	<b>\$ 237,926</b>	<b>-</b>	<b>-</b>	<b>-</b>	<b>\$ -</b>	<b>\$0</b>	<b>\$36,847</b>	<b>\$798,232</b>	<b>0</b>	<b>0.000</b>	

**Solar 4 All Year-to-Date Activity Report**

Year-to-Date Update through January 2025											
Segment	Energy Produced (MWh AC)	Net Energy Sales (\$)	SREC's Sold	SREC Revenue (\$)	Capacity Sold (MW-days)	Net Capacity Sales (\$)	Business Interruption Insurance Recovery (\$)	Investment (\$)	Program Expenses (\$)	Projects Completed / Seg 2 Panels Installed	MW Installed
Segment 1a	969	\$ 50,841			-	\$ -	\$0	\$0	\$98,020	0	0.0
Segment 1b	1,128	\$ 59,835			-	\$ -	\$0	\$0	\$105,131	0	0.0
Segment 1c	122	\$ 6,170			-	\$ -	\$0	\$0	\$135,959	0	0.0
Segment 2	2,231	\$ 121,080			-	\$ -	\$0	\$36,847	\$459,123	0	0.000
<b>YTD Program Total</b>	<b>4,449</b>	<b>\$ 237,926</b>	<b>-</b>	<b>\$ -</b>	<b>-</b>	<b>\$ -</b>	<b>\$0</b>	<b>\$36,847</b>	<b>\$798,232</b>	<b>0</b>	<b>0</b>

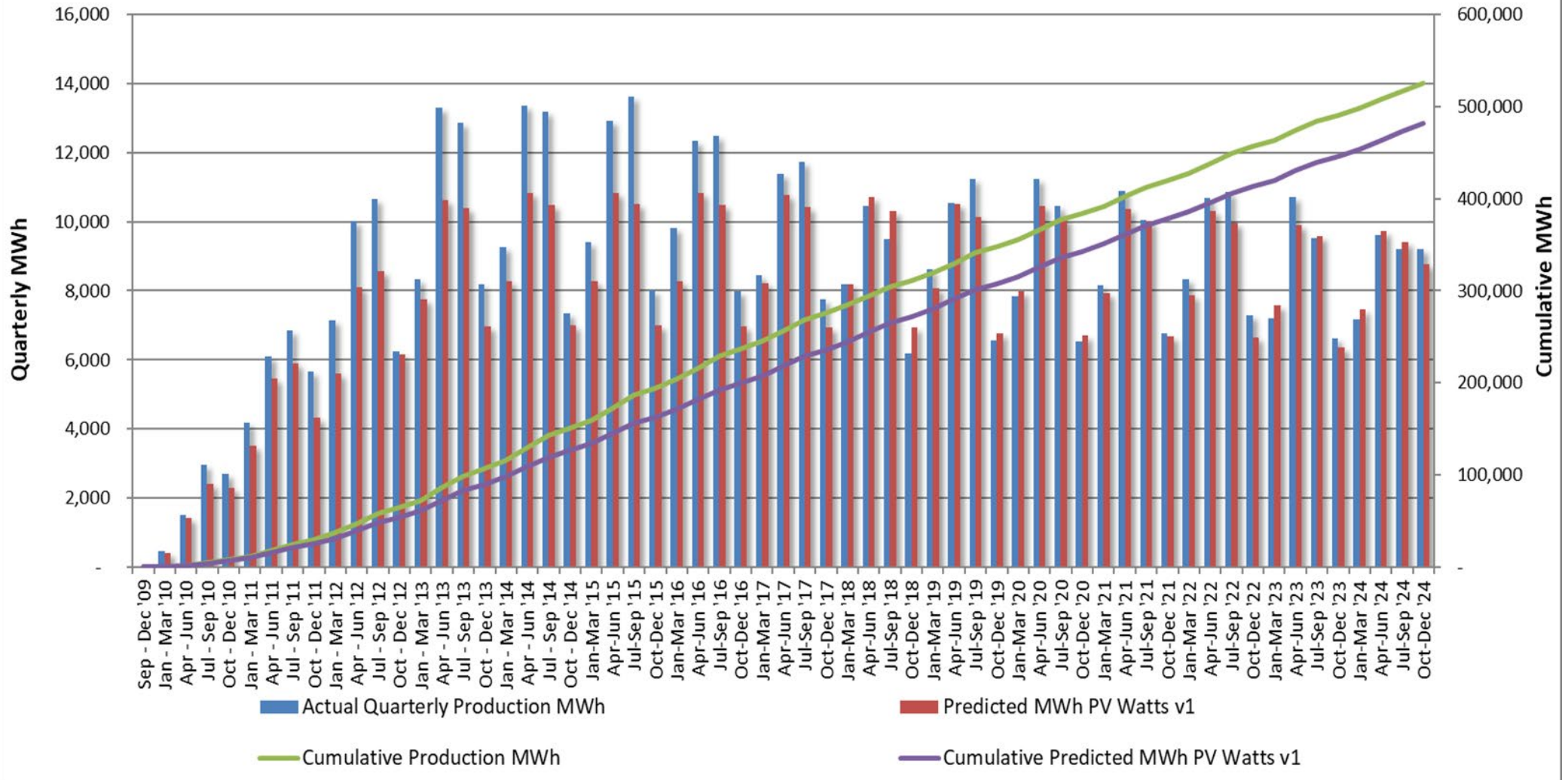
**Solar 4 All Program-to-Date Activity Report**

Program-to-Date through January 2025											
Segment	Energy Produced (MWh AC)	Net Energy Sales (\$)	SREC's Sold	SREC Revenue (\$)	Capacity Sold (MW-days)	Net Capacity Sales (\$)	Business Interruption Insurance Recovery (\$)	Investment (\$)	Program Expenses (\$)	Projects Completed / Seg 2 Panels Installed	MW Installed
Segment 1a	256,520	\$8,875,871	255,123	\$55,798,063	15,316.7	\$2,286,339	\$320,277	\$101,891,694	\$11,414,584	10	16.0
Segment 1b	293,470	\$10,841,191	290,957	\$61,620,214	16,886.7	\$2,807,758	\$457,127	\$85,478,643	\$28,948,567	8	18.5
Segment 1c	78,797	\$2,740,406	79,634	\$17,366,669	5,958.6	\$812,967	\$0	\$35,916,068	\$10,698,847	6	5.4
Segment 2	484,130	\$19,283,363	497,631	\$109,805,469	33,520.0	\$5,163,194	\$0	\$286,137,776	\$52,007,130	161,304	35.7
<b>Program-to-date Total</b>	<b>1,112,917</b>	<b>\$41,740,832</b>	<b>1,123,345</b>	<b>\$244,590,415</b>	<b>71,682.0</b>	<b>\$11,070,259</b>	<b>\$777,404</b>	<b>\$509,424,181</b>	<b>\$103,069,128</b>	<b>161,328</b>	<b>75.6</b>

Notes:

- 1) "SREC's Sold" and "SREC Revenue" includes vintage year 2011 through 2024 SRECs
- 2) Monthly "Pole-attached Units Installed" & "Pole-attached MW Installed" are preliminary estimates and subject to change. Adjustments to prior months will be reflected in YTD values.  
Capacity specified in certain previously filed capacity reports represented gross installed capacity. The values shown in the table above account for net installed capacity (total installs minus total removals).
- 3) "Pole Attached Units Communicating" represents the *average, daily* number of panels that communicated during the month.
- 4) The columns "Energy Produced" and "SRECs Sold" do not sync because of the timing of SREC auctions, through which SRECs are sold.
- 5) Business interruption insurance recovery received for lost energy sales and SREC sales due to Superstorm Sandy

### PSE&G Pole-Attached Solar: Quarterly Performance vs. PV Watts



**Total S4A Fleet Performance:**

January weather conditions were unfavorable for solar production.

**Seg2 (Pole Attached Solar):**

- Ongoing maintenance of existing installations continues.

**REDACTED**

<b>PSE&amp;G Pole-Attached -- Summary by Municipality -- January 2025</b>		
	<b>Total</b>	<b>Total kWdc</b>
Allentown Boro	55	11.83
Audubon Boro	519	110.78
Audubon Park Boro	48	9.95
Barrington Boro	382	82.34
Bayonne City	1824	416.06
Belleville Twp	900	209.43
Bellmawr Boro	1119	240.04
Bergenfield Boro	464	104.68
Berkeley Heights Twp	5	1.2
Beverly City	276	58.03
Bloomfield Twp	1117	263.48
Bogota Boro	209	49.22
Bordentown City	71	15.17
Bordentown Twp	930	200.16
Bound Brook Boro	445	101.47
Branchburg Twp	25	6
Bridgewater Twp	1903	426.93
Brooklawn Boro	251	52.9
Burlington City	1,335	283.48
Burlington Twp	1379	288.64
Caldwell Boro	205	48.42
Camden City	6265	1362.22
Carlstadt Boro	732	170.77
Carteret Boro	1827	391.6
Cedar Grove Twp	584	137.03
Cherry Hill Twp	3487	744.19
Chesterfield Twp	433	93.22
Cinnaminson Twp	1377	288.85
Clark Twp	751	166.41
Cliffside Park Boro	300	70.92
Clifton City	3316	772.57
Collingswood Boro	731	157.13
Cranbury Twp	341	74.36
Cranford Twp	744	166.56
Cresskill Boro	2	0.44
Delanco Twp	327	67.76
Delran Twp	740	154.3
Deptford Twp	1815	393.1
Dumont Boro	464	103.77
Dunellen Boro	335	74.6
East Amwell Twp	2	0.41
East Brunswick Twp	2413	529.4
East Newark Boro	37	8.22
East Orange City	1420	335.04
East Rutherford Boro	484	113.17
Eastampton Twp	327	68.26
Edgewater Boro	120	28.01
Edgewater Park Twp	556	114.75
Edison Twp	5,503	1194.53
Elizabeth City	3745	815.77
Elizabeth City	292	64.83

\*Installs pending municipal data updates not included in total



**REDACTED**

<b>PSE&amp;G Pole-Attached -- Summary by Municipality -- January 2025</b>		
	<b>Total</b>	<b>Total kWdc</b>
Elmwood Park Boro	791	181.61
Emerson Boro	286	63.86
Englewood City	900	207.48
Englewood Cliffs Boro	268	63.52
Essex Fells Twp	65	15.26
Evesham Twp	863	183.12
Ewing Twp	2,652	570.13
Fair Lawn Boro	1098	245.12
Fairfield Twp Ess	1147	267.82
Fairview Boro	268	62.57
Fanwood Boro	275	63.14
Fieldsboro Boro	69	15.27
Florence Twp	980	206.65
Fort Lee Boro	699	164.65
Franklin Twp Som	3238	698.44
Franklin Twp Som	98	22.16
Garfield City	626	145.85
Garwood Boro	247	55.89
Glen Ridge Boro	18	4.3
Glen Rock Boro	160	36.09
Gloucester City	992	212.87
Gloucester Twp	1790	385.25
Green Brook Twp	346	78.03
Guttenberg Town	25	5.97
Hackensack City	1498	346.93
Haddon Heights Boro	372	82.09
Haddon Twp	988	211.51
Haddonfield Boro	166	37.4
Hainesport Twp	567	121.17
Haledon Boro	124	27.88
Hamilton Twp Mer	7040	1513.27
Harrison Town	339	76.59
Hasbrouck Heights	385	90.06
Haworth Boro	41	9.38
Hawthorne Boro	481	106.51
Highland Park Boro	577	126.91
Hillsborough Twp	1764	387.5
Hillsborough Twp	1	0.2
Hillsdale Boro	35	8.19
Hillside Twp	730	160.05
Hillside Twp	3	0.62
Hi-Nella Boro	51	10.92
Hoboken City	323	76.21
Hohokus Boro	41	9.09
Hopewell Boro	76	17.83
Hopewell Twp Mer	516	114.03
Irvington Town	1183	263.12
Jersey City	4,521	1027.35
Kearny Town	1	0.2
Kearny Town	1431	320.79
Kenilworth Boro	378	83.34

\*Installs pending municipal data updates  
not included in total

Count of Panels by Municipality  
\*Net of removals

Panel Report  
Page 8 of 16



**REDACTED**

<b>PSE&amp;G Pole-Attached -- Summary by Municipality -- January 2025</b>		
	<b>Total</b>	<b>Total kWdc</b>
Lawnside Boro	270	58.19
Lawrence Twp Mer	1577	340.46
Leonia Boro	186	43.49
Lincoln Park Boro	6	1.39
Linden City	2979	635.48
Little Falls Twp	455	105.26
Little Ferry Boro	493	113.83
Livingston Twp	2	0.46
Livingston Twp	495	116.49
Lodi Boro	680	157.83
Lumberton Twp	487	101.86
Lyndhurst Twp	914	213.9
Magnolia Boro	439	97.54
Mansfield Twp Bur	615	127.35
Manville Boro	641	144.71
Maple Shade Twp	1342	282.64
Maplewood Twp	393	88.47
Maywood Boro	227	53.49
Medford Lakes Boro	32	6.75
Medford Twp	668	139.53
Merchantville Boro	217	46.43
Metuchen Boro	629	138.48
Middlesex Boro	980	218.89
Midland Park Boro	81	19.11
Millburn Twp	9	2.13
Millstone Boro	38	8.32
Milltown Boro	12	2.79
Monroe Twp Mid	3	0.63
Montclair Twp	779	185.39
Montgomery Twp	20	4.46
Montgomery Twp	812	178.55
Moonachie Boro	394	89.84
Moorestown Twp	1,178	251.45
Mount Ephraim Boro	351	74.58
Mount Holly Twp	590	124.71
Mount Laurel Twp	1,187	252.27
Mountainside Boro	315	72.4
National Park Boro	357	77.95
New Brunswick City	2011	431.74
New Milford Boro	310	70.3
Newark City	8,442	1892.22
North Arlington Boro	533	123.09
North Bergen Twp	1338	312.85
North Brunswick Twp	2275	495.86
North Caldwell Twp	204	47.14
North Haledon Boro	51	11.74
North Hanover Twp	2	0.48
North Plainfield Boro	661	148.19
Nutley Town	587	138.21
Oaklyn Boro	292	61.66
Old Tappan Boro	11	2.64

\*Installs pending municipal data updates  
not included in total

**REDACTED**

<b>PSE&amp;G Pole-Attached -- Summary by Municipality -- January 2025</b>		
	<b>Total</b>	<b>Total kWdc</b>
Oradell Boro	103	22.85
Orange City	615	146.05
Palisades Park Boro	428	100.93
Palmyra Boro	442	92.17
Paramus Boro	795	180.15
Park Ridge Boro	3	0.72
Passaic City	1067	248.3
Paterson City	3394	772.21
Paulsboro Boro	6	1.24
Pemberton Twp	136	28.28
Pennington Boro	82	19.1
Pennsauken Twp	3,742	785.74
Perth Amboy City	1669	362.1
Piscataway Twp	3288	704
Plainfield City	1785	395.9
Plainsboro Twp	259	56.88
Princeton Boro	55	12.52
Princeton Twp	155	34.04
Prospect Park Boro	113	25.33
Rahway City	1550	347.91
Raritan Boro	301	66
Ridgefield Boro	375	87.62
Ridgefield Park Village	400	94.59
Ridgewood Village	151	34.14
River Edge Boro	294	66.94
River Vale Twp	13	2.87
Riverside Twp	592	123.3
Riverton Boro	119	25.64
Rochelle Park Twp	270	61.95
Rocky Hill Boro	18	3.94
Roseland Boro	164	38.68
Roselle Boro	711	157.18
Roselle Park Boro	323	74.12
Runnemede Boro	589	127.75
Rutherford Boro	235	52.32
Saddle Brook Twp	15	3.33
Saddle Brook Twp	330	75.11
Saddle River Boro	10	2.4
Scotch Plains Twp	706	160.24
Secaucus Town	1080	251.59
Somerdale Boro	417	90.12
Somerville Boro	776	169.56
South Bound Brook Boro	217	47.74
South Brunswick Twp	1601	349.01
South Brunswick Twp	538	115.81
South Hackensack Twp	234	54.48
South Orange Village Twp	114	26.9
South Plainfield Boro	2573	550.59
Southampton Twp	870	182.26
Springfield Twp Bur	528	110.3
Springfield Twp Uni	32	7.29

\*Installs pending municipal data updates  
not included in total

**REDACTED**

<b>PSE&amp;G Pole-Attached -- Summary by Municipality -- January 2025</b>		
	<b>Total</b>	<b>Total kWdc</b>
Tavistock Boro	1	0.22
Teaneck Twp	757	174.28
Tenafly Boro	338	77.18
Teterboro Boro	183	42.87
Totowa Boro	757	173.32
Trenton City	5098	1110.17
Union City	27	6.28
Union Twp Uni	2334	515.6
Upper Freehold Twp	82	17.57
Verona Boro	194	46.24
Voorhees Twp	352	76.83
Waldwick Boro	191	42.69
Wallington Boro	297	68.97
Wallington Boro	5	1.16
Warren Twp	60	12.8
Washington Twp Ber	109	24.6
Washington Twp Glo	39	8.4
Washington Twp Mer	396	84.64
Watchung Boro	357	79.38
Wayne Twp	1418	324.6
Weehawken Twp	3	0.72
West Caldwell Twp	550	129.82
West Deptford Twp	1	0.2
West Deptford Twp	1865	400.33
West New York Town	33	7.47
West Orange Twp	1135	264.68
West Paterson Boro	340	78.21
West Windsor Twp	756	164.75
Westampton Twp	480	101.03
Westfield Town	1198	279.52
Westville Boro	574	121.86
Westwood Boro	228	50.50
Willingboro Twp	841	174.11
Winfield Twp	18	3.67
Woodbridge Twp	6854	1444.37
Woodbury City	1002	217.84
Woodbury Heights Boro	280	60.78
Woodcliff Lake Boro	69	16.26
Woodlynne Boro	148	31
Wood-Ridge Boro	387	91
Wyckoff Twp	54	12
<b>Grand Total:</b>	<b>196129</b>	<b>43228.54</b>

\*Installs pending municipal data updates  
not included in total

**PSE&G Pole-Attached -- Count of Aggregators by Municipality - January 2025**

<b>Municipality</b>	<b>Count of Aggregators Installed through January 2025</b>
Allentown Boro	3
Audubon Boro	7
Barrington Boro	7
Bayonne City	21
Belleville Twp	15
Bellmawr Boro	18
Bergenfield Boro	8
Beverly City	3
Bloomfield Twp	18
Bogota Boro	3
Bordentown City	1
Bordentown Twp	13
Bound Brook Boro	6
Branchburg Twp	1
Bridgewater Twp	43
Brooklawn Boro	6
Burlington City	20
Burlington Twp	19
Caldwell Boro	4
Camden City	62
Carlstadt Boro	13
Carteret Boro	19
Cedar Grove Twp	8
Cherry Hill Twp	64
Chesterfield Twp	16
Cinnaminson Twp	20
Clark Twp	14
Cliffside Park Boro	3
Clifton City	42
Collingswood Boro	10
Cranbury Twp	20
Cranford Twp	11
Delanco Twp	3
Delran Twp	11
Deptford Twp	32
Dumont Boro	6
Dunellen Boro	4
East Brunswick Twp	38
East Newark Boro	6
East Orange City	15
East Rutherford Boro	6
Eastampton Twp	8
Edgewater Boro	10
Edgewater Park Twp	6
Edison Twp	83
Elizabeth City	53
Elmwood Park Boro	12
Emerson Boro	7
Englewood City	22

**PSE&G Pole-Attached -- Count of Aggregators by Municipality - January 2025**

<b>Municipality</b>	<b>Count of Aggregators Installed through January 2025</b>
Englewood Cliffs Boro	5
Essex Fells Twp	2
Evesham Twp	15
Ewing Twp	35
Fair Lawn Boro	17
Fairfield Twp Ess	16
Fairview Boro	5
Fanwood Boro	5
Fieldsboro Boro	1
Florence Twp	12
Fort Lee Boro	12
Franklin Twp Som	67
Garfield City	9
Garwood Boro	3
Glen Rock Boro	13
Gloucester City	12
Gloucester Twp	24
Green Brook Twp	7
Guttenberg Town	1
Hackensack City	24
Haddon Heights Boro	4
Haddon Twp	13
Haddonfield Boro	10
Hainesport Twp	3
Haledon Boro	1
Hamilton Twp Mer	92
Harrison Town	4
Hasbrouck Heights	4
Haworth Boro	2
Hawthorne Boro	10
Highland Park Boro	11
Hillsborough Twp	39
Hillsdale Boro	2
Hillside Twp	10
Hi-Nella Boro	1
Hoboken City	12
Hohokus Boro	3
Hopewell Boro	4
Hopewell Twp Mer	28
Irvington Town	16
Jersey City	89
Kearny Town	15
Kenilworth Boro	7
Lawnside Boro	3
Lawrence Twp Mer	36
Leonia Boro	2
Linden City	40
Little Falls Twp	15
Little Ferry Boro	7

**PSE&G Pole-Attached -- Count of Aggregators by Municipality - January 2025**

<b>Municipality</b>	<b>Count of Aggregators Installed through January 2025</b>
Livingston Twp	27
Lodi Boro	11
Lumberton Twp	14
Lyndhurst Twp	12
Magnolia Boro	5
Mansfield Twp Bur	15
Manville Boro	9
Maple Shade Twp	12
Maplewood Twp	7
Maywood Boro	7
Medford Lakes Boro	3
Medford Twp	24
Merchantville Boro	1
Metuchen Boro	11
Middlesex Boro	9
Midland Park Boro	6
Millstone Boro	1
Montclair Twp	16
Montgomery Twp	37
Moonachie Boro	5
Moorestown Twp	20
Mount Ephraim Boro	4
Mount Holly Twp	9
Mount Laurel Twp	27
Mountainside Boro	8
National Park Boro	6
New Brunswick City	26
New Milford Boro	6
Newark City	123
North Arlington Boro	8
North Bergen Twp	26
North Brunswick Twp	25
North Caldwell Twp	11
North Haledon Boro	3
North Plainfield Boro	8
Nutley Town	8
Oaklyn Boro	8
Old Tappan Boro	1
Oradell Boro	2
Orange City	10
Palisades Park Boro	5
Palmyra Boro	7
Paramus Boro	24
Passaic City	22
Paterson City	46
Pemberton Twp	6
Pennington Boro	3
Pennsauken Twp	50
Perth Amboy City	24

**PSE&G Pole-Attached -- Count of Aggregators by Municipality - January 2025**

<b>Municipality</b>	<b>Count of Aggregators Installed through January 2025</b>
Piscataway Twp	57
Plainfield City	26
Plainsboro Twp	10
Princeton Boro	9
Princeton Twp	15
Prospect Park Boro	1
Rahway City	17
Raritan Boro	6
Ridgefield Boro	3
Ridgefield Park Village	6
Ridgewood Village	10
River Edge Boro	11
River Vale Twp	1
Riverside Twp	3
Riverton Boro	3
Rochelle Park Twp	5
Rocky Hill Boro	4
Roseland Boro	10
Roselle Boro	10
Roselle Park Boro	5
Runnemede Boro	8
Rutherford Boro	8
Saddle Brook Twp	7
Saddle River Boro	1
Scotch Plains Twp	12
Secaucus Town	17
Somerdale Boro	6
Somerville Boro	8
South Bound Brook Boro	2
South Brunswick Twp	48
South Hackensack Twp	3
South Orange Village Twp	5
South Plainfield Boro	42
Southampton Twp	23
Springfield Twp Bur	14
Teaneck Twp	17
Tenafly Boro	12
Teterboro Boro	2
Totowa Boro	11
Trenton City	56
Union City	2
Union Twp Uni	34
Upper Freehold Twp	2
Verona Boro	3
Voorhees Twp	7
Waldwick Boro	10
Wallington Boro	2
Warren Twp	5
Washington Twp Ber	6



**PSE&G Pole-Attached -- Count of Aggregators by Municipality - January 2025**

<b>Municipality</b>	<b>Count of Aggregators Installed through January 2025</b>
Washington Twp Glo	2
Washington Twp Mer	3
Watchung Boro	14
Wayne Twp	52
West Caldwell Twp	9
West Deptford Twp	24
West New York Town	3
West Orange Twp	27
West Paterson Boro	9
West Windsor Twp	22
Westampton Twp	9
Westfield Town	27
Westville Boro	4
Westwood Boro	5
Willingboro Twp	18
Woodbridge Twp	90
Woodbury City	16
Woodbury Heights Boro	1
Woodcliff Lake Boro	5
Woodlynne Boro	2
Wood-Ridge Boro	4
Wyckoff Twp	5
<b>Grand Totals:</b>	<b>3302</b>