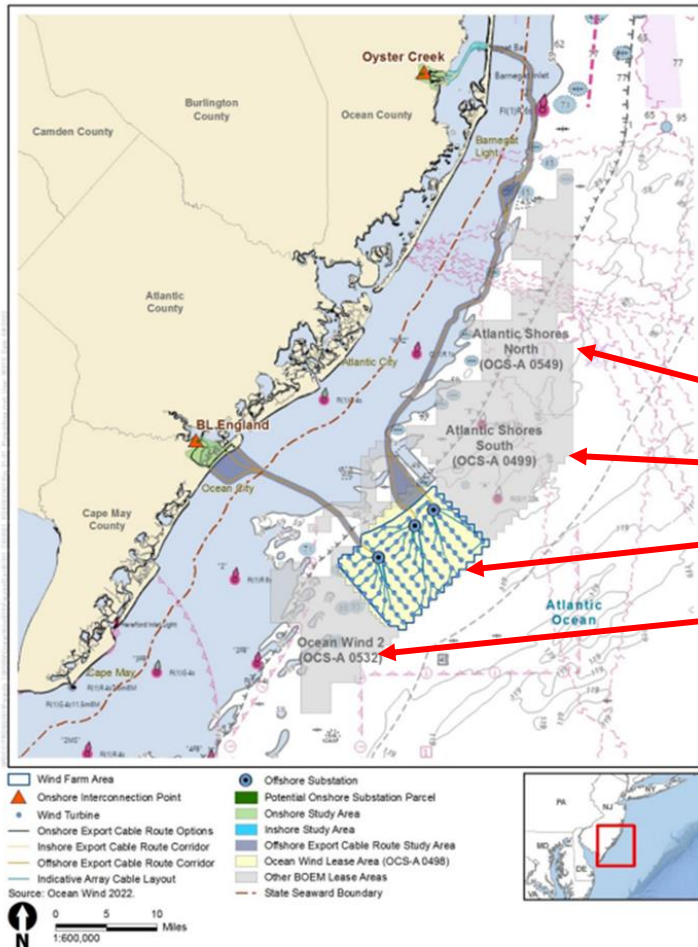


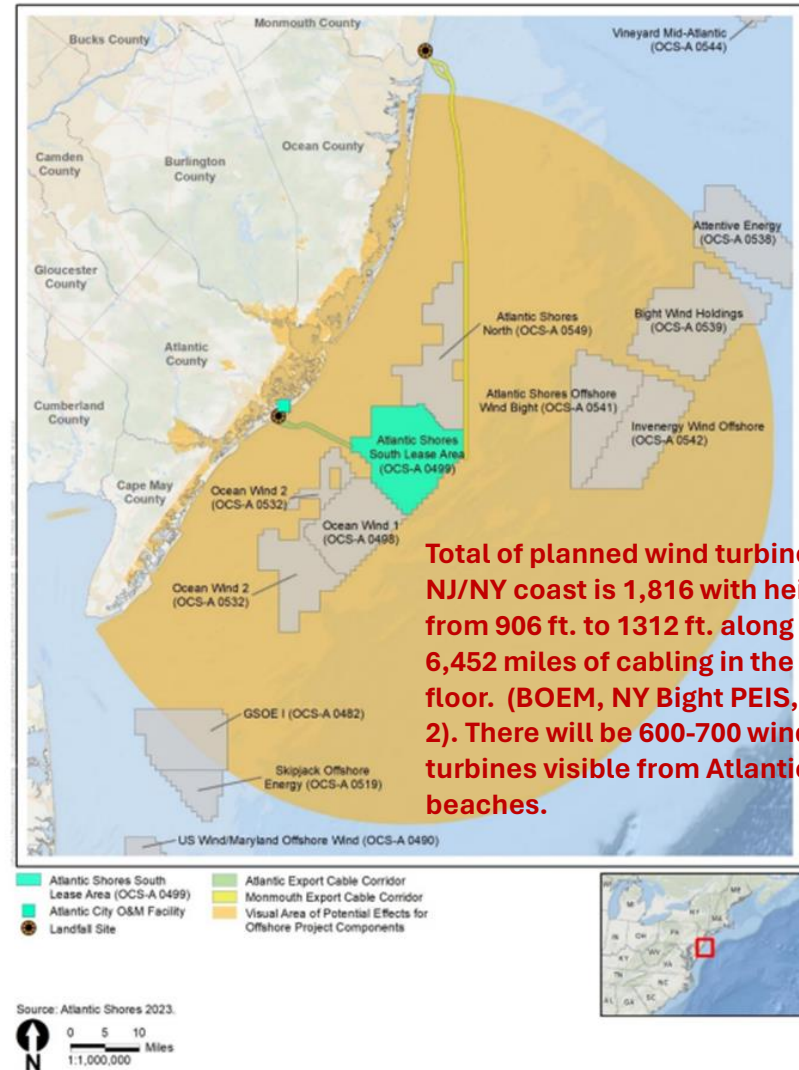
Defend Brigantine Beach and Downbeach Presentation

Offshore Wind: Catastrophic Impact to Our Atlantic County Economy

Cumulative Historic Resources Visual Effects Analysis – Atlantic Shores Offshore Wind South Project



Ocean Wind and Atlantic Shores projects plan for 566 wind turbines, sized up to 1049 feet high starting 9 miles off the coast. Closely spaced .6-1 mile apart.

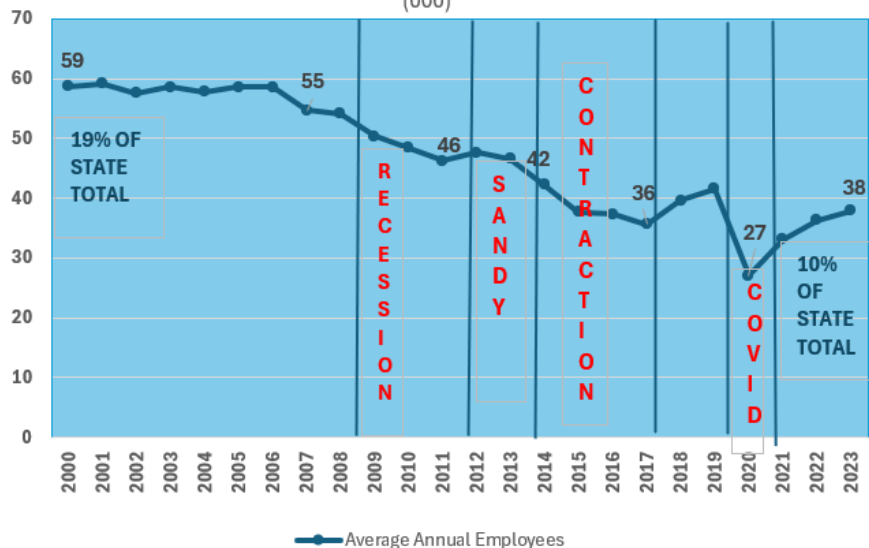


History of Economic Shocks to the Atlantic County Economy

Atlantic County Leisure and Hospitality Employment

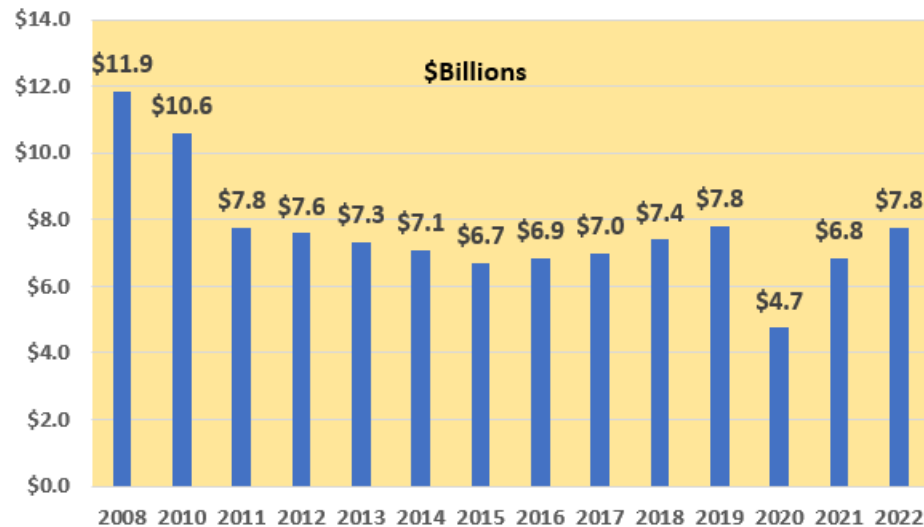
SOURCE: BUREAU OF LABOR STATISTICS

(000)



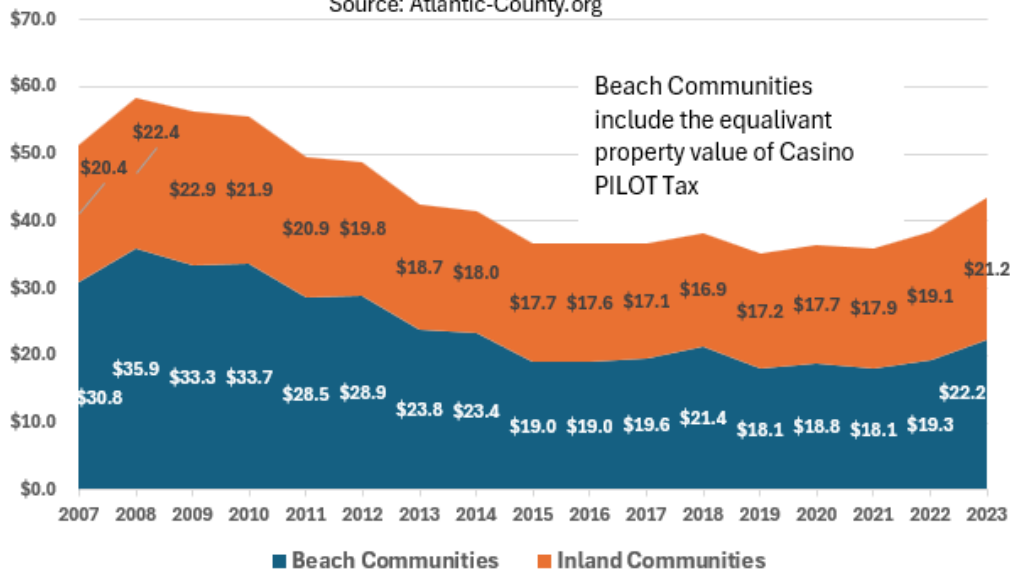
Atlantic County Annual Tourism Spending

Source: VisitNJ.gov



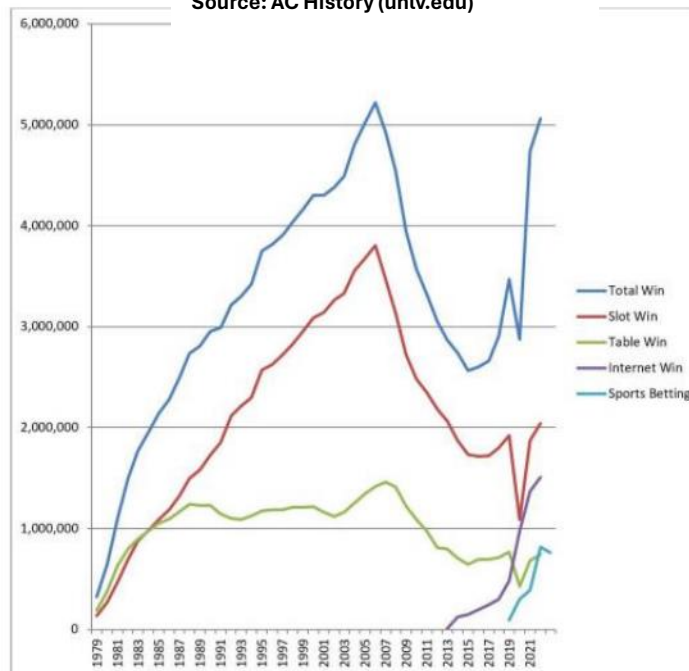
Atlantic County Property Values (\$Billions, Equalized Values)

Source: Atlantic-County.org



Atlantic City Casinos: Casino Win, 1978-2022

Source: AC History (unlv.edu)



Offshore Wind Projects: Catastrophic Impact on Atlantic County Economy

- **Rental Demand Loss:** 50% of prior renters would not rent again with turbines visible regardless of rent discount. Including Atlantic City, Atlantic County annual rental income loss could be \$17.2 M (10%) to \$68.9 M (30%).
- **Tourism Revenue, Job Losses, and Tax Losses:**
 - 16.5% - 24% would not visit Atlantic County beach town, which could be a loss of:
 - 8,700-12,700 jobs
 - \$1.3 – \$1.9B in annual tourist spending
 - \$142 - \$206 million government annual tax loss revenue
 - **Casino Losses and Consolidation:** Bricks and mortar revenue losses for casinos may cause further consolidation in AC. Tourism losses will reduce revenues and relative tax and fee reductions to the annual \$200+ million PILOT tax payments and \$700+ million annual Gaming Specific taxes and fees. Casino PILOT ends in 2026.
- **Fragile Seasonal Tourism Businesses** will be bankrupted by a 24% commercial energy rate increase.
- **Fisheries:** AC Clamming Industry will be devastated by offshore wind turbine locations, cabling trenching and scour protection of turbine bases and cabling on ocean floor.
- **Recreational Fishing Revenue= \$19M/ YR** to the NJ economy. How will this be impacted during years of construction and operation?
- **Events:** Impact to Annual Farley Marina Jimmy Johnson Fishing Tournament, Annual Atlantic City Air Show, Beach Concerts, and other Beach Centric Entertainment Events, Bars and Restaurants is unknown.
- **Residential Property Value Loss:** Based on the impact of an industrialized ocean view from beach homes in A.C, Brigantine, Long Port, Margate and Ventnor, total property values will be reduced by \$2.1 billion, and the County, municipalities, and school districts will lose \$35.2 million in annual taxes.



JOIN THE FIGHT – IT'S NOT TOO LATE!

WEBSITE – Defendbrigantinebeach.org

FACEBOOK – Join our Facebook group: [Defend Brigantine Beach and Downbeach](#)

TWITTER – [@DefendBrigBeach](#) **INSTAGRAM** – [@defendbrigantinebeach](#)

VOLUNTEER – Email Defendbrigantinebeach@gmail.com for more info

DONATE – ***PayPal** – Defendbrigantinebeach@gmail.com

***Venmo** – [Defendbrigantinebeach](#) ***GoFundMe** – [Defend Brigantine Beach](#)

***Check** – Make payable to Defend Brigantine Beach, Inc.

Mail to P.O. Box 562, Brigantine, NJ 08203

Defend Brigantine Beach, Inc. is a not-for-profit 501(c)3 organization.