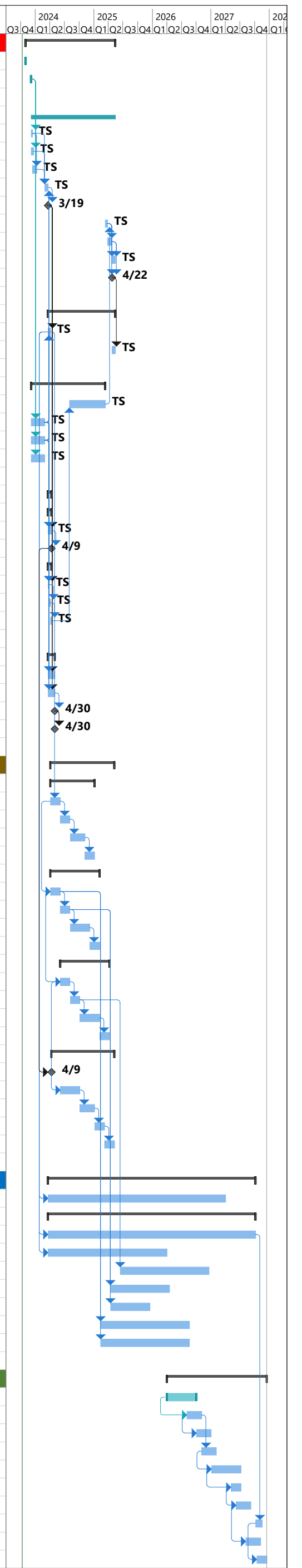


ID	Task Mode	Task Name	Duration	Start	Finish	Predecessors	2024	2025	2026	2027	2028	
							Q3	Q4	Q1	Q2	Q3	Q4
1		<b>PJM / OWNER</b>	<b>401 days?</b>	<b>Tue 10/31/23</b>	<b>Tue 5/13/25</b>							
2		<b>PJM Award</b>	<b>1 day</b>	<b>Tue 10/31/23</b>	<b>Tue 10/31/23</b>							
3		<b>PJM Board Approval</b>	<b>1 day</b>	<b>Tue 12/5/23</b>	<b>Tue 12/5/23</b>							
4												
5		<b>Internal Project Funding</b>										
6		Program & Asset creation	5 days	Wed 12/6/23	Tue 12/12/23	3						
7		Transource Board Approval	10 days	Wed 12/6/23	Tue 12/19/23	3						
8		CARB Approval	20 days	Wed 12/13/23	Tue 1/9/24	6						
9		Phase 1 Routing	15 days	Wed 2/28/24	Tue 3/19/24	6,8,7,22,23						
10		Phase 1 Approval	0 days	Tue 3/19/24	Tue 3/19/24	9						
11		Transource Board Approval P2	10 days	Wed 3/12/25	Tue 3/25/25	21						
12		CARB Approval	20 days	Wed 3/26/25	Tue 4/22/25	11						
13		Phase 2 Routing	15 days	Wed 4/23/25	Tue 5/13/25	11,12						
14		Phase 2 Approval	0 days	Tue 4/22/25	Tue 4/22/25	11,12						
15												
16		<b>Kiewit Authorizations</b>	<b>300 days</b>	<b>Wed 3/20/24</b>	<b>Tue 5/13/25</b>							
17		LNTP	10 days	Wed 3/20/24	Tue 4/2/24	10,22,23						
18		FNTP	15 days	Wed 4/23/25	Tue 5/13/25	14						
19												
20		<b>Regulatory</b>	<b>330 days</b>	<b>Wed 12/6/23</b>	<b>Tue 3/11/25</b>							
21		LON	160 days	Wed 7/31/24	Tue 3/11/25	33FS+80 days						
22		Abandonment Protections	60 days	Wed 12/6/23	Tue 2/27/24	3						
23		CWIP	60 days	Wed 12/6/23	Tue 2/27/24	3						
24		DEA	60 days	Wed 12/6/23	Tue 2/27/24	3						
25												
26		<b>SOAR Activities</b>	<b>15 days</b>	<b>Wed 3/20/24</b>	<b>Tue 4/9/24</b>							
27		<b>Outreach Activities</b>	<b>15 days</b>	<b>Wed 3/20/24</b>	<b>Tue 4/9/24</b>							
28		Outreach Planning / Preparation	15 days	Wed 3/20/24	Tue 4/9/24	10,22,23						
29		Proposed Route Announcement	0 days	Tue 4/9/24	Tue 4/9/24	28						
30		<b>Siting Activities</b>	<b>15 days</b>	<b>Wed 3/20/24</b>	<b>Tue 4/9/24</b>							
31		Siting Work Authorization	5 days	Wed 3/20/24	Tue 3/26/24	10,22,23						
32		Siting Contractor kickoff	5 days	Wed 3/27/24	Tue 4/2/24	31						
33		Selection of the Proposed Route	5 days	Wed 4/3/24	Tue 4/9/24	32						
34												
35		<b>Property Purchase</b>	<b>30 days</b>	<b>Wed 3/20/24</b>	<b>Tue 4/30/24</b>							
36		Alta Survey	30 days	Wed 3/20/24	Tue 4/30/24	10,22,23						
37		Environmental Site Inspection	30 days	Wed 3/20/24	Tue 4/30/24	10,22,23						
38		Close on Property	0 days	Tue 4/30/24	Tue 4/30/24	37						
39		Station Site Ready for Construction	0 days	Tue 4/30/24	Tue 4/30/24	38						
40												
41		<b>ENGINEERING</b>	<b>286 days</b>	<b>Wed 4/3/24</b>	<b>Wed 5/7/25</b>							
42		<b>Civil</b>	<b>198 days</b>	<b>Wed 4/3/24</b>	<b>Fri 1/3/25</b>							
43		30%	44 days	Wed 4/3/24	Mon 6/3/24	17						
44		60%	44 days	Tue 6/4/24	Fri 8/2/24	43						
45		IFR	66 days	Mon 8/5/24	Mon 11/4/24	44						
46		IFC	44 days	Tue 11/5/24	Fri 1/3/25	45						
47		<b>Physical</b>	<b>220 days</b>	<b>Wed 4/3/24</b>	<b>Tue 2/4/25</b>							
48		30%	44 days	Wed 4/3/24	Mon 6/3/24	43SS						
49		60%	44 days	Tue 6/4/24	Fri 8/2/24	48						
50		IFR	88 days	Mon 8/5/24	Wed 12/4/24	49						
51		IFC	44 days	Thu 12/5/24	Tue 2/4/25	50						
52		<b>Protection &amp; Control</b>	<b>220 days</b>	<b>Tue 6/4/24</b>	<b>Mon 4/7/25</b>							
53		30%	44 days	Tue 6/4/24	Fri 8/2/24	48SS+44 days						
54		60%	44 days	Mon 8/5/24	Thu 10/3/24	53						
55		IFR	88 days	Fri 10/4/24	Tue 2/4/25	54						
56		IFC	44 days	Wed 2/5/25	Mon 4/7/25	55						
57		<b>Transmission Line Support</b>	<b>281 days</b>	<b>Tue 4/9/24</b>	<b>Wed 5/7/25</b>							
58		Final Route Established	0 days	Tue 4/9/24	Tue 4/9/24	29SS						
59		30%	88 days	Tue 6/4/24	Thu 10/3/24	53SS						
60		60%	66 days	Fri 10/4/24	Fri 1/3/25	59						
61		IFR	44 days	Mon 1/6/25	Thu 3/6/25	60						
62		IFC	44 days	Fri 3/7/25	Wed 5/7/25	61						
63												
64		<b>PROCUREMENT</b>	<b>925 days</b>	<b>Wed 3/20/24</b>	<b>Tue 10/5/27</b>							
65		Main Power Transformers	792 days	Wed 3/20/24	Thu 4/1/27	17SS						
66		<b>Circuit Breakers</b>	<b>925 days</b>	<b>Wed 3/20/24</b>	<b>Tue 10/5/27</b>							
67		500kV Breakers	925 days	Wed 3/20/24	Tue 10/5/27	17SS						
68		230kV Breakers	530 days	Wed 3/20/24	Tue 3/31/26	17SS						
69		Control House	396 days	Fri 6/13/25	Fri 12/18/26	54FS+180 days						
70		Substation Steel	264 days	Mon 4/14/25	Thu 4/16/26	49FS+180 days						
71		Bus / Jumpers / Equipment	176 days	Mon 4/14/25	Mon 12/15/25	49FS+180 days						
72		SSVT's	396 days	Tue 2/11/25	Tue 8/18/26	48FS+180 days						
73		CCVT's	396 days	Tue 2/11/25	Tue 8/18/26	48FS+180 days						
74												
75		<b>CONSTRUCTION</b>	<b>445 days</b>	<b>Wed 4/1/26</b>	<b>Tue 12/14/27</b>							
76		Civil Work & Ash Pond	132 days	Wed 4/1/26	Thu 10/1/26							
77		Foundations	66 days	Mon 8/3/26	Mon 11/2/26	76SS+88 days						
78		Grounding & Conduit	66 days	Fri 10/2/26	Fri 1/1/27	77SS+44 days						
79		Steel	66 days	Tue 11/3/26	Tue 2/2/27	77						
80		Bus / Jumpers	132 days	Mon 1/4/27	Tue 7/6/27	79SS+44 days						
81		Equipment (Ctrl House, XFMR, 230kV CB's, CCVT's, SSVT's)	44 days	Thu 5/6/27	Tue 7/6/27	80SS+88 days						
82		Wire Cabling & Terminations	66 days	Mon 6/7/27	Mon 9/6/27	81SS+22 days						
83		Equipment (500kV CB's)	30 days	Wed 10/6/27	Tue 11/16/27	67						
84		Testing & Commissioning	66 days	Fri 8/6/27	Fri 11/5/27	82SS+44 days						
85		Testing & Commissioning (500kV CB's)	44 days	Thu 10/14/27	Tue 12/14/27	83SS+6 days						



Project: EPC Project Schedule  
Date: Thu 10/12/23

Task		Inactive Task		Manual Summary Rollup		External Milestone	
Split		Inactive Milestone		Manual Summary		Deadline	
Milestone		Inactive Summary		Start-only		Progress	
Summary		Manual Task		Finish-only		Manual Progress	
Project Summary		Duration-only		External Tasks			