

**SCHENCK
PRICE
SMITH &
KING, LLP**
ATTORNEYS AT LAW
~ Founded 1912 ~

Serving Our Clients and Community
For Over 100 Years

RECEIVED
JUL 21 2016
BOARD OF PUBLIC UTILITIES
MAIL ROOM

SIDNEY A. SAYOVITZ
Admitted in NJ and DC
Direct Line: 973-540-7356
Email: sas@spsk.com

220 Park Avenue
PO Box 991
Florham Park, NJ 07932
Telephone: 973-539-1000
Fax: 973-540-7300

www.spsk.com

July 21, 2016

RECEIVED
JUL 21 2016
By *cmc*

VIA HAND DELIVERY

Irene Kim Asbury, Secretary
Board of Public Utilities
44 South Clinton Avenue, 3rd Floor
Suite 314
P.O. Box 350
Trenton, New Jersey 08625-0350

In the Matter of the Verified Joint Petition of Altice N.V. and Cablevision Systems Corporation and Cablevision Cable Entities for Approval to Transfer Control of Cablevision Cable Entities

BPU Docket No.: CM15111255

and

In the Matter of the Verified Joint Petition of Altice N.V. and Cablevision Systems Corporation, Cablevision Lightpath-NJ, LLC and 4Connections LLC for Approval to Transfer Control of Cablevision Lightpath-NJ, LLC and 4Connections, LLC and for Certain Financing Arrangements

BPU Docket No.: TM15111256

Dear Ms. Asbury:

On behalf of Altice USA, enclosed please find the original and one copy of the following documents responsive to the post-closing requirements set forth in the Board's Order in the above captioned matters:

- 1) Certification of the undersigned as to the lack of material deviation of the executed closing documents from those terms and conditions described in the Board's Order in the above captioned matters and/or submitted to the Board with the related petitions.

*Case mgmt
Legal
C. Vachon
D. Selbot*

- 2) A description of Altice USA's network in New Jersey (confidential and redacted versions). As a result of the billions of dollars in investment in the network made by Altice's predecessor, Altice New Jersey customers enjoy superior connectivity, as recognized by FCC reports measuring the performance of the largest ISPs across the country.¹ Altice plans to build on Cablevision's investment in the network in New Jersey, including rolling out a 300 Mbps broadband product and continuing its investment in WiFi. We would be pleased to address any questions on the attached submission. The confidential version is being provided under seal.
- 3) Document setting forth the Service Quality Benchmark as of December 31, 2015 (confidential and redacted versions). The confidential version is being provided under seal.

We have also enclosed, pursuant to N.J.A.C. 14:1-12.1 et seq., the affidavit of Paul Jamieson, Esq. with supporting letter brief substantiating Altice USA's claim of confidentiality.

Respectfully submitted,

SCHENCK, PRICE, SMITH & KING, LLP



Sidney A. Sayovitz

Encls.

cc: Lawanda Gilbert, Director
Office of Cable Television and Telecommunications (via Hand Delivery)
Paul Jamieson, Esq.

¹ See FCC, Measuring Broadband America, 2015, Fixed Broadband Report, December 30, 2015, listing Cablevision as one of the best performing ISPs in tests assessing actual versus advertised speeds, latency, web loading and other metrics of broadband performance.

STATE OF NEW JERSEY
BOARD OF PUBLIC UTILITIES

RECEIVED

JUL 21 2016

BOARD OF PUBLIC UTILITIES
MAIL ROOM

IN THE MATTER OF THE VERIFIED
PETITION OF ALTICE N.V. AND
CABLEVISION SYSTEMS
CORPORATION AND CABLEVISION
CABLE ENTITLES FOR APPROVAL TO
TRANSFER CONTROL OF CABLEVISION
CABLE ENTITIES

BPU DOCKET NO. CM15111255

BPU DOCKET NO. TM15111256



IN THE MATTER OF THE VERIFIED
PETITION OF ALTICE N.V. AND
CABLEVISION SYSTEMS
CORPORATION, CABLEVISION
LIGHTPATH-NJ, LLC AND
4CONNECTIONS LLC FOR APPROVAL
TO TRANSFER CONTROL OF
CABLEVISION LIGHTPATH-NJ, LLC
AND 4CONNECTIONS LLC, AND FOR
CERTAIN FINANCING ARRANGMENTS

**CERTIFICATION OF
SIDNEY A. SAYOVITZ**

Sidney A. Sayovitz, of full age, hereby certifies as follows:

1. I am an attorney-at-law in the State of New Jersey and serve as counsel for the Petitioners in the above-captioned matter.
2. In reliance upon information supplied to me by officials of the Petitioners and upon information and belief, I hereby attest to the lack of material deviation in the executed closing documents referenced in the above-captioned matter from those terms and conditions described in the Board Order and/or submitted to the Board with the Petitions filed herein.



Sidney A. Sayovitz

Dated: July 21, 2016

NJ Network Infrastructure

July 21, 2016

REDACTED



Infrastructure Overview

REDACTED

Optimum Online Network Architecture

REDACTED

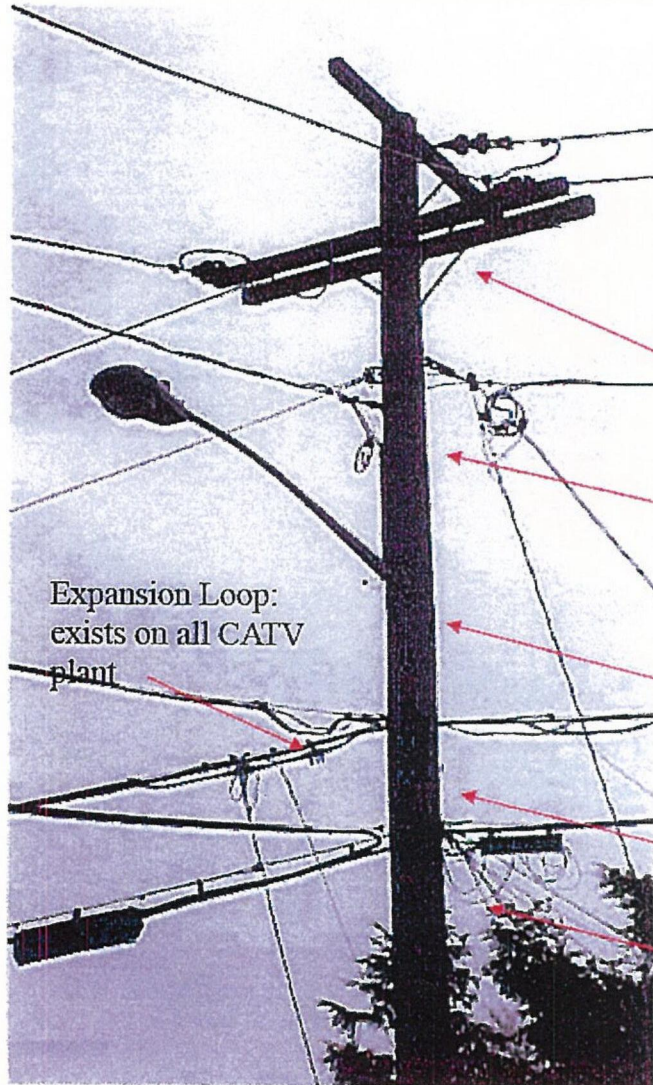
Cable TV: Outside Plant Network Overview

REDACTED

Fiber Network - NJ

REDACTED

Pole Attachments



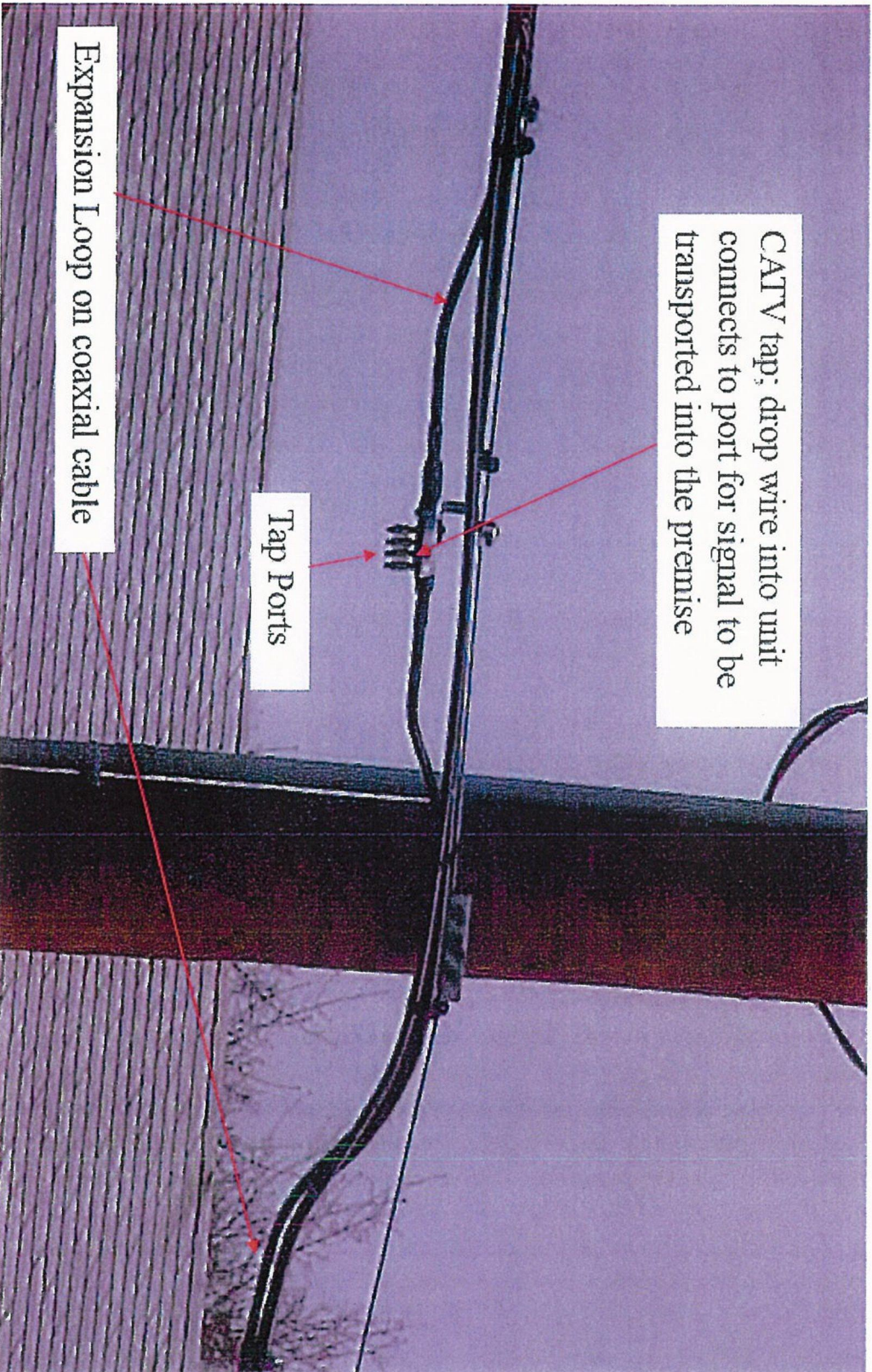
CATV Plant Attachment on Poles

Wires are arranged on poles with lowest voltage at the bottom and specified clearances to provide safety to pole workers.

- Primary Power
- Secondary power
- Street light
- CATV (our wire)
- Telephone



Coaxial Cable and Tap



Fiber Closure & Node

REDACTED

Power Supply

REDACTED

Tap & WiFi Access Point

REDACTED

Amplifier

REDACTED

Optimum Online Speed Tiers

REDACTED

Proof of Performance (POP) Metrics

REDACTED

Industry Leading Network Operations Center (NOC)

REDACTED

REDACTED

ALTICE USA

Service Quality Benchmark (as of December 31, 2015)

In response to the request from the Board in its May 25, 2016 Order that Petitioners supply a “Service Quality Benchmark” for 2015, please be advised that the number of Repair and Service calls per customer per year for 2015 was _____.

July 21, 2016